

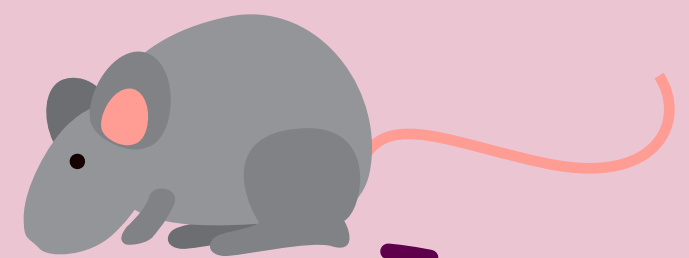


How to **MONITOR**  
**PEST ACTIVITY**  
in a **FOOD SITE**



# RODENT BAIT STATIONS

Stations must be locked, labeled, and tamper-resistant to prevent access by non-targeted animals.





**BAIT**

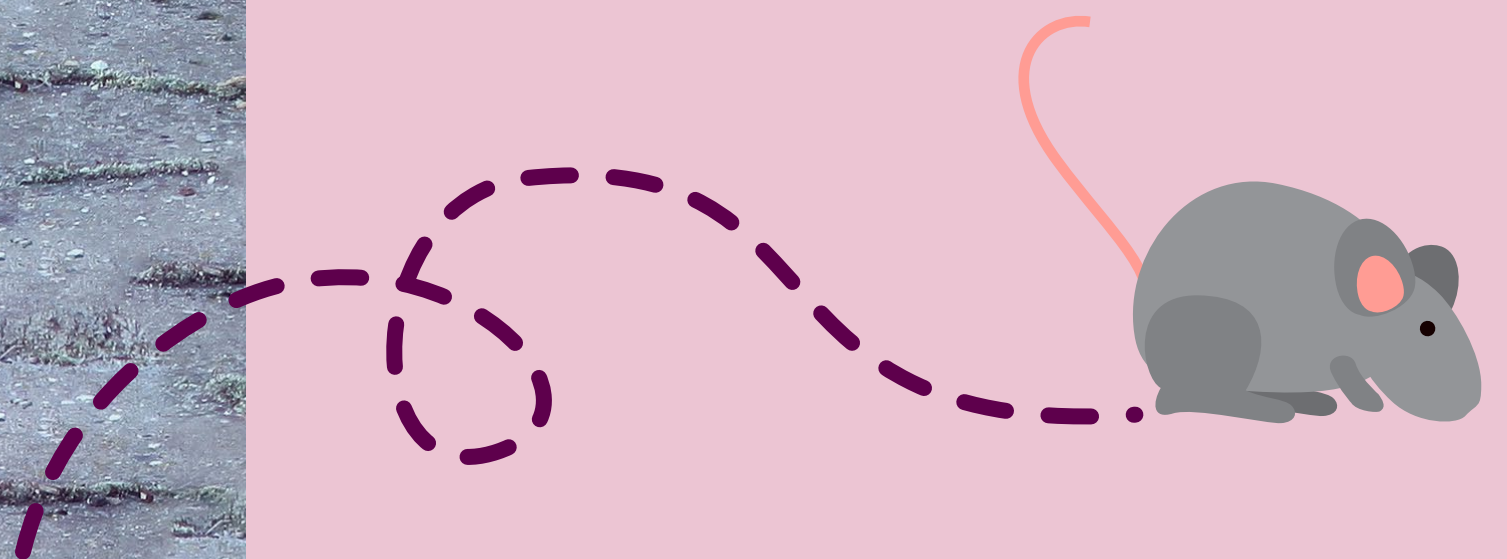


Rodenticide is only used when secured inside exterior bait stations and not used inside the facility.

# MECHANICAL TRAPS

Mouse traps are deployed along perimeter walls of the facility and monitored on a frequency based on risk and historical data.

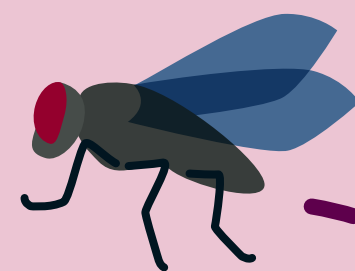
Rat traps are placed inside when evidence of rat activity is noted on the building exterior.

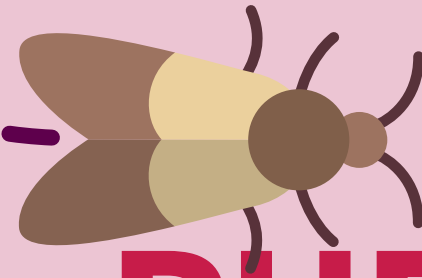




# INSECT LIGHT TRAPS

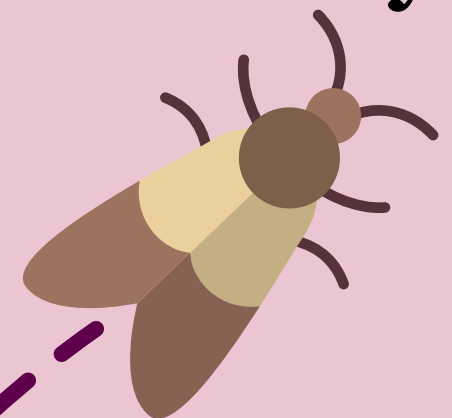
These devices are used for monitoring. They could be placed in areas where doors open to the exterior, but in a position or angle that does not attract insects into the building.

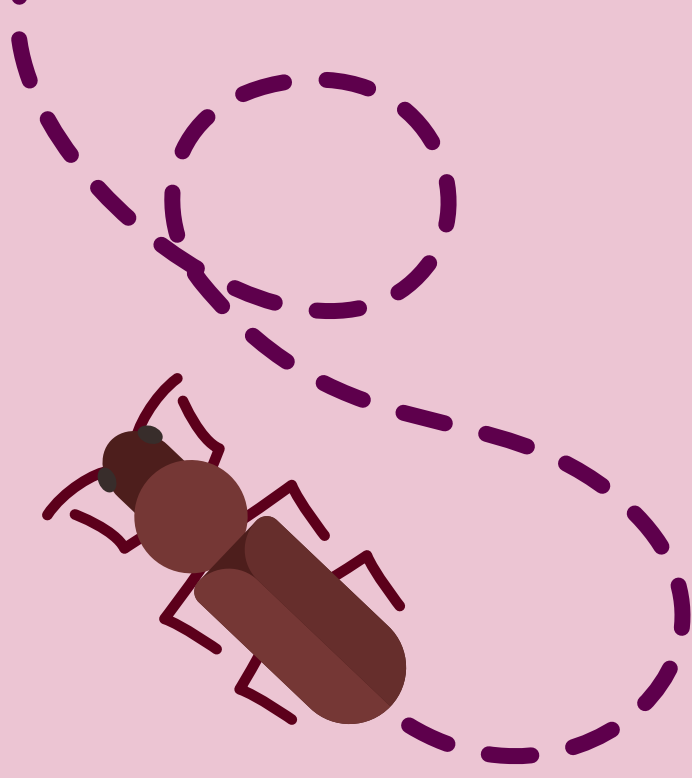




# PHEROMONE TRAPS

**These traps contain a pheromone that is species specific and are useful for monitoring for stored product insect activity. These devices are useful in sites with products (grain-based) prone to stored product activity.**





# INSPECTIONS

**Make sure you inspect incoming materials for signs of pest activity. Reject it if pest evidence is found. Complete formal site inspections to check for the presence of pest activity.**

